

Issue #1 – September 2025

**Subject:** Safety Harnesses, Rear Hub Axles & Racing Seats – Revised Standards & Compliance Notes

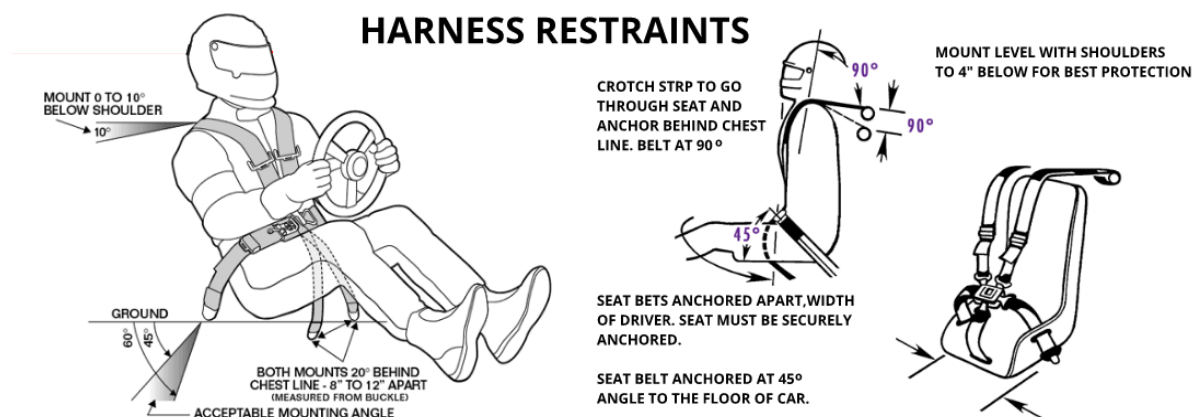
Dear IHRA Australia, Technical Team,

As part of our ongoing commitment to safety, consistency, and technical excellence across all sanctioned events, this newsletter outlines key revisions and reminders regarding three critical components: Safety Harnesses, Rear Hub Axles, and Racing Seats. These updates reflect our evolving standards and align with international best practices, ensuring IHRA Australia remains at the forefront of motorsports safety.

## Safety Harnesses – Revised Compliance Protocols

Effective immediately, all competitors must adhere to the following harness standards:

- Minimum Rating: SFI 16.1 or FIA equivalent.



### General Reg 5910, Interior, Harness

In good condition and securely fastened to the frame or reinforced mounting point.

#### **Mandatory**

### General Reg 5920, Interior, Harness

Reinforcement are minimum of 75 mm (3 inches) by 75 mm (3 inches) by 3 mm (1/8 inch) steel plate.

#### **Mandatory**

### General Reg 5930, Interior, Harness

All harnesses must be labelled or stamped by the manufacturer with their production date or an expiration (use by) date. Onus is on the competitor/owner to ensure that all Harnesses are in date. Out of date Harnesses will require exclusion from the event on the day.

#### **Mandatory**

### General Reg 5940, Interior, Harness

Fitted as recommended by the manufacturer, using the supplied hardware.

#### **Mandatory**

**General Reg 5950, Interior, Harness**

Bolts penetrate through belt webbing.

**Forbidden**

**General Reg 5960, Interior, Harness**

Webbing crosses any surface sharper than a diameter of 10 mm (3/8 inch).

**Forbidden**

**General Reg 5970, Interior, Harness**

Protective plates installed where belts wrap around any section of the frame which is exposed to abrasion.

**Mandatory**

**General Reg 5980, Interior, Harness**

If seat is mounted in the upright position, then straps mounted as per the attached image.

**Mandatory**

**General Reg 5990, Interior, Harness**

If seat is mounted in the inclined position, then straps mounted as per the attached image.

**Mandatory**

**General Reg 6000, Interior, Harness**

If the two shoulder straps join prior to a common mounting point, then the junction of the belts is at least six inches behind the driver's neck.

**Mandatory**

**General Reg 6010, Interior, Harness**

If safety belts incorporate a lever type centre buckle, then fitted with a quick release cover or flap to prevent accidentally release of the buckle.

**Mandatory**

**General Reg 6020, Interior, Harness**

If sedan and slower than 10.50 (1/8 mile equivalent) or is a modern street vehicle slower than 10.00 (1/8 mile equivalent) then the minimum of a quick release, lap/sash(three point) type required. Must comply with Australian Standard E35 or AS/NZ 2596. Definition of a Modern Street Car is one that was delivered from factory with a minimum of a drivers air bag and four wheel brakes.

**Mandatory**

**General Reg 6030, Interior, Harness**

If pre-modern sedan running between 10.50 and 10.00 then a minimum four point harness. Must comply with Australian Standard E35 or AS/NZ 2596.

**Mandatory**

**General Reg 6060, Interior, Harness**

All vehicles requiring a Tech Inspection under 200 MPH- then harness to be no older than 10 years from date of manufacture or 5 years from the expiry date.

**Mandatory**

**General Reg 6070, Interior, Harness**

All vehicles requiring a Tech Inspection then harnesses manufactured to allow for frontal Head Restraint System are acceptable. Must comply to SFI 16.1 Minimum and FIA equivalent.

**Mandatory**

**General Reg 6080, Interior, Harness**

All vehicles requiring a Tech Inspection, then centre-locking, five point or six point 'V' type racing harness required.

**Mandatory**

**General Reg 6100, Interior, Harness**

All vehicles requiring a Tech Inspection then minimum webbing width as per manufactures requirements complying with SFI 16.1 minimum or FIA equivalent when used with approved head and neck restraint systems.

**Mandatory****General Reg 6130, Interior, Harness**

If sedans, Dragster, Altered or Funny Car, and with a known performance of more than 200 mph (320 kph), then centre-locking V-Type racing harness, five or six point as a minimum.

**Mandatory****General Reg 6140, Interior, Harness**

If sedans, Dragster, Altered or Funny Car, and with a known performance of more than 200 mph (320 kph), then complies to SFI 16.1 minimum or FIA equivalent.

**Mandatory****General Reg 6150, Interior, Harness**

All vehicles with a known performance of more than 200MPH, then no older than 2 years from date of manufacture and must not exceed expiration date SFI 16.1 minimum. FIA equivalent no older than 5 years from date of manufacture and/or must not exceed expiration date.

**Mandatory****General Reg 6155, Interior, Harness**

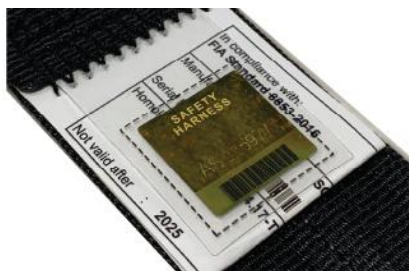
If junior Dragster, minimum 2 inch wide 5 point harness meeting SFI 16.1 or 16.2 or FIA equivalent minimum. No older than 10 years from date of manufacture or 5 years from expiry date.

**Mandatory****Installation:**

- Shoulder belts must anchor within 10° of the driver's shoulder height.
- Lap belts must be mounted at a 45° angle downward from the hips.
- Anti-submarine straps are mandatory in all vehicles faster than 10.00 seconds (¼ mile).

**Inspection Protocol:**

- Inspectors must verify label integrity, expiration, and signs of wear or fraying.
- Any harness with faded, illegible, or missing certification labels must be rejected.

**ABOVE LABELS examples:**

**FIA:** Vehicles quicker than 200mph Expiry 31/12/2025

Vehicles slower than 200mph Expiry 31/12/2030

**SFI:** Vehicles quicker than 200mph Expiry 30/06/2027

Vehicles slower than 200mph Expiry 30/06/2032

## Rear Hub Axles – Structural Integrity & Fastener Protocols

Recent incidents have prompted a review of rear hub axle configurations. The following standards are now mandatory:

### General Regulation 3230, Drivetrain, Rear Hubs

If Supercharged, Turbocharged or Nitrous Oxide injected, and faster than 7.5 seconds (1/4 mile) / 4.90 seconds (1/8 mile), then fully-floating rear hubs. Except If weight is less than 2500 lbs including driver, then two-piece, 40-spline, aftermarket axle.

**Mandatory**

### Inspection Focus:

- Inspect for signs of fatigue, cracking, or improper machining.



FLANGED AXLES



40 SPLINE 2 PIECE AXLES  
2500lbs and lighter vehicles



FLOATER HUBS

## Racing Seats – Mounting, Materials

### General Reg 6160, Interior, Seats

If competition vehicle, then seat provides collision, spin out or upset protection for entirety of driver's back and shoulders.

**Mandatory**

### General Reg 6170, Interior, Seats

Correct size to suit driver.

**Mandatory**

### General Reg 6180, Interior, Seats

If faster than 10.00 seconds (1/4 mile) or 6.50 seconds (1/8 mile) then it is recommended that a purpose built racing seat to FIA or SFI standards be used.

**Mandatory**

### General Reg 6190, Interior, Seats

Quicker than 10.00 seconds (1/4 mile or equivalent) and Australian Standard, ADR-approved or reclining style seats.

**Mandatory**

### General Reg 6200, Interior, Seats

Quicker than 10.00 seconds (1/4 mile or equivalent) and sliding seat mechanisms and sliding mechanism cannot be positively isolated from movement.

**Mandatory**

**General Reg 6210, Interior, Seats**

Custom made.

**Allowed**

**General Reg 6215, Interior, Seat Pour**

Effective 01/02/2024 For Pro Slammer, Pro Mod vehicles, a custom seat made from either aluminium or carbon fibre must be formed with energy-absorbing material, formed to the driver of the vehicle's body, and covered with a minimum of one layer of flame-retardant material. The seat frame must be installed as a permanent part of the chassis.

**Mandatory**



RECARO



KIRKY



RACEtech

**General Reg 6216, Interior, Seats**

Race-style seats that have the head restraint system built into the seat. E.g., Racetech, Velo, or Sparco may be used in lieu of seats using a seat pour.

**Mandatory**

**General Reg 6220, Interior, Seats**

Cross member or frame supports and secures driver's seat, at bottom and back.

**Mandatory**

**General Reg 6230, Interior, Seats**

If not original floors or mounts, then not secured to subfloor or floor.

**Mandatory**

**General Reg 6240, Interior, Seats**

Adequate external or internal support, mounted according to manufacturer guidelines and recognised racing seats and no external bracing.

**Mandatory**

**General Reg 6250, Interior, Seats**

If fibreglass or similar, then 13 mm (1/2 inch) steel tube framework used to create external brace.

**Mandatory**

**General Reg 6260, Interior, Seat - Position**

Mounted so as to allow driver sufficient forward vision.

**Mandatory**

**General Reg 6270, Interior, Seats**

If known performance or a class record quicker than 10.00 seconds (1/4 mile) or 6.50 seconds (1/8 mile), then fitted with purpose-built race seat from recognised race seat manufacturer, or custom built for chassis.

**Mandatory**

**General Reg 6280, Interior, Seats – Purpose Built**

If purpose built, then includes openings to permit correct harness use.

**Mandatory**

**General Reg 6290, Interior, Seats – Purpose Built**

If purpose built, then design is one piece without adjustable back rest or each seat section is securely mounted to chassis to secure driver in any incident.

**Mandatory**

**Seat Standards:**

- FIA 8855 or SFI 39.2 certification required.
- Australian Standard, ADR-approved

**Mounting:**

- Seats must be bolted directly to the chassis or reinforced mounting plates.
- Minimum of four Grade 8 bolts with backing washers.

**Condition:**

- Inspectors must check for cracks, deformation, and loose padding.

---

**Enforcement & Education**

All IHRA Australia Technical Inspectors are empowered to:

- Conduct random audits at events.
- Request documentation or manufacturer specs.
- Remove non-compliant vehicles from competition pending rectification.

**Closing Notes**

These revisions are part of our broader initiative to unify IHRA Australia's technical policies and elevate our safety culture. Your diligence, consistency are instrumental in upholding these standards.

For questions or clarification, contact:

Technical Department – 0425 265 763

Email: [tnielsen@ihraaustralia.com.au](mailto:tnielsen@ihraaustralia.com.au)

Stay sharp, stay safe, and thank you for your continued excellence.

IHRA Australia Technical Department

Legacy through safety. Precision through inspection.